

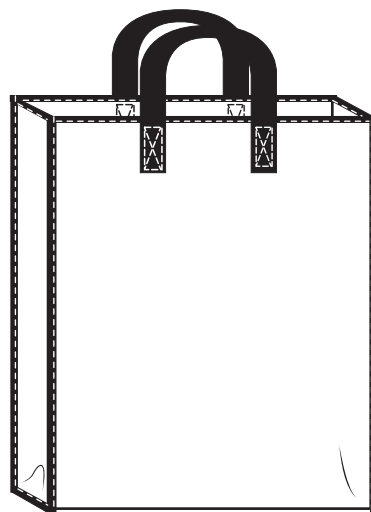
DIY2419 Dorota square shopper

dorotasquashopper

36 × 42 × 15 cm

Seam allowance is included on all patterns:
All over 0,7 cm

All rights reserved
Selfmade



You need to cut the following parts

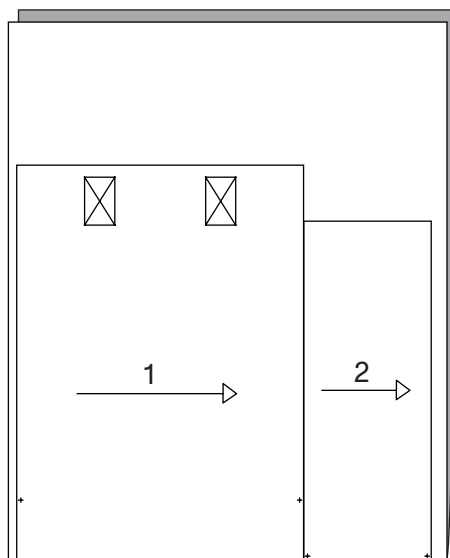
Part 1 Front x 1
Part 2 Side x 2

You need the following fabric and accessories

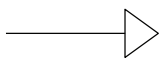
Fabric: w/135 cm 55 cm

Accessories:

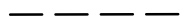
120 cm webbing ribbon 38 mm
320 cm bias tape 18 mm



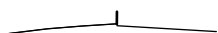
Symbols you may find on your patterns



Grain line



Fold line



Notch



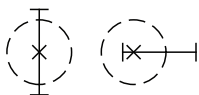
Gathering



Interlining



Cut line



Placement of button and buttonhole

10 CM

Self
made®



▲
Unsure how to print?
See this guide

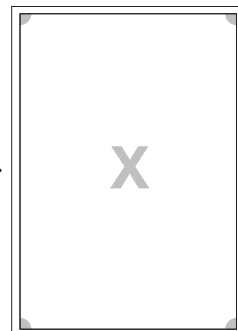
CONTROL SQUARE:

Print this page, to check the square measurements:
If the measurements do not match, please adjust your printer settings.

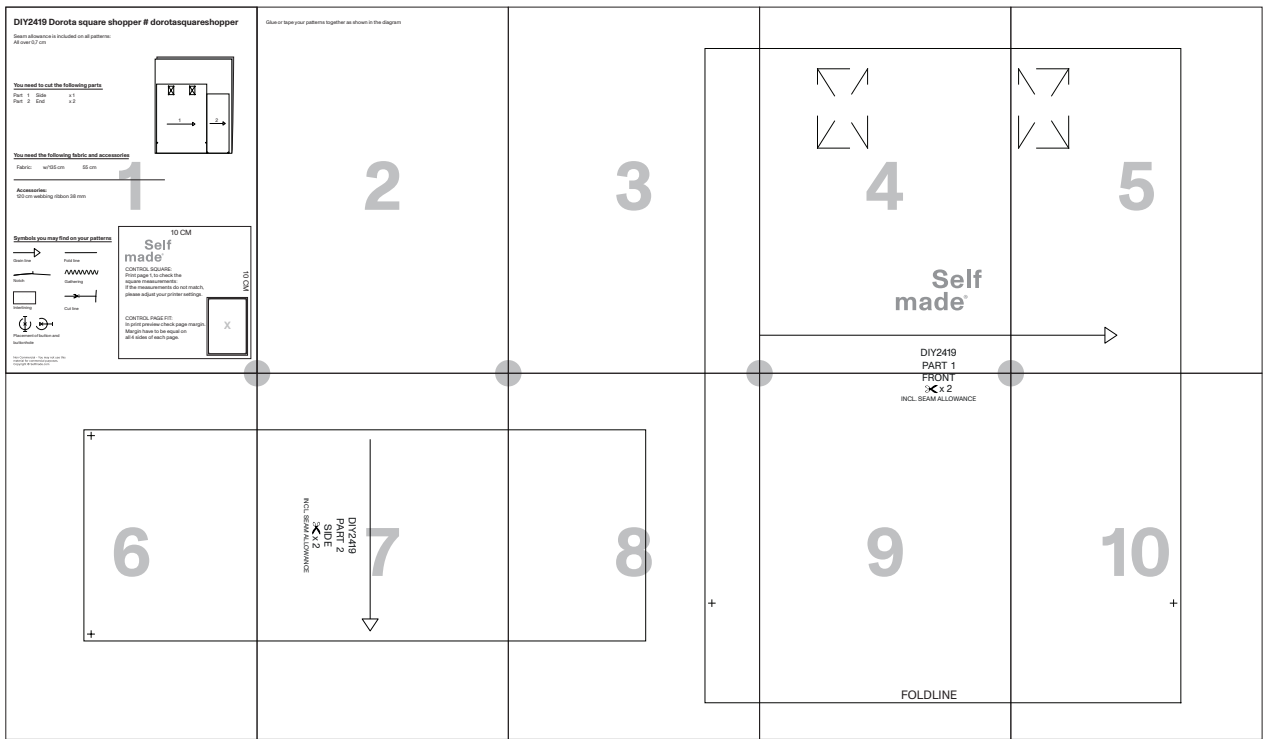
10 CM

CONTROL PAGE FIT:

In print preview check page margin.
Margin have to be equal on all 4 sides of each page.

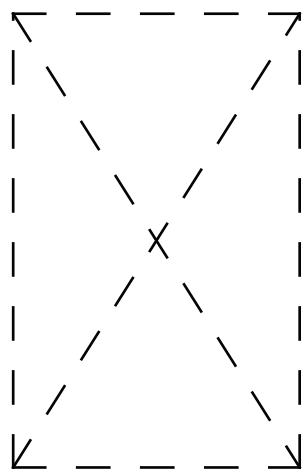


Glue or tape your patterns together as shown in the diagram



2

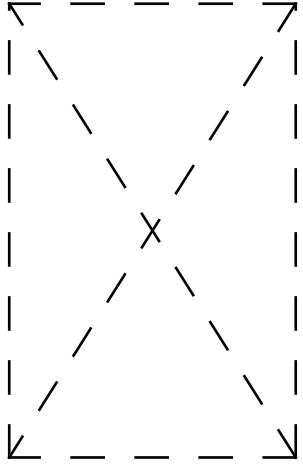
3



4

**Self
made[®]**

DIY2419
PART 1



5



+

6 S

+

DIY2419
PART 2
SIDE
✂ x 2
INCL. SEAM ALLOWANCE



Free download from

f

m8m

+

FRONT

✂ x1

INCL. SEAM ALLOWANCE

n Selfmade.com

90d

FOLDLINE

e¹⁰®

+